

GUID





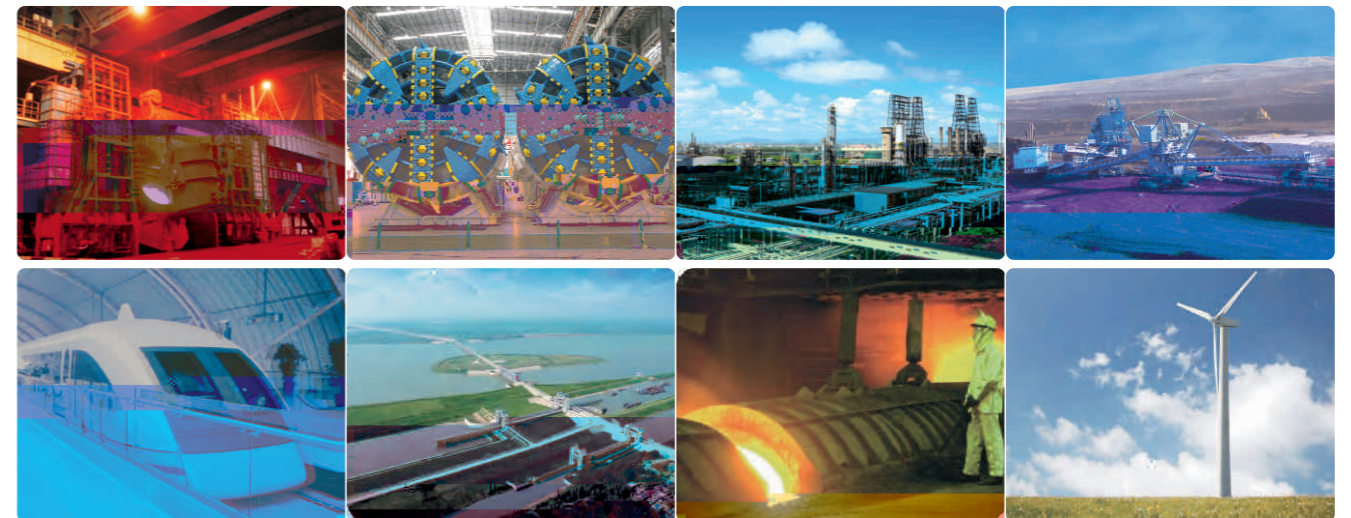
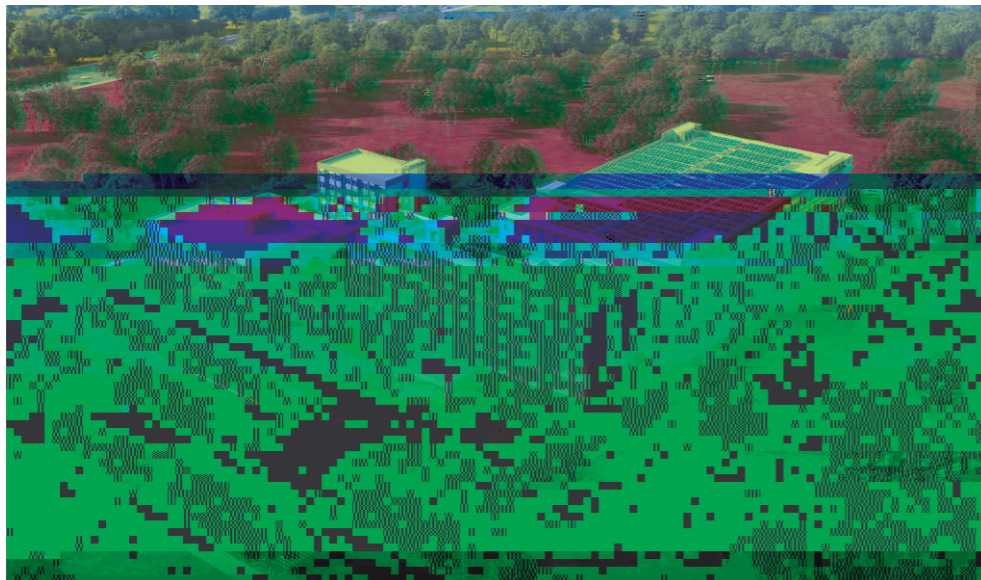
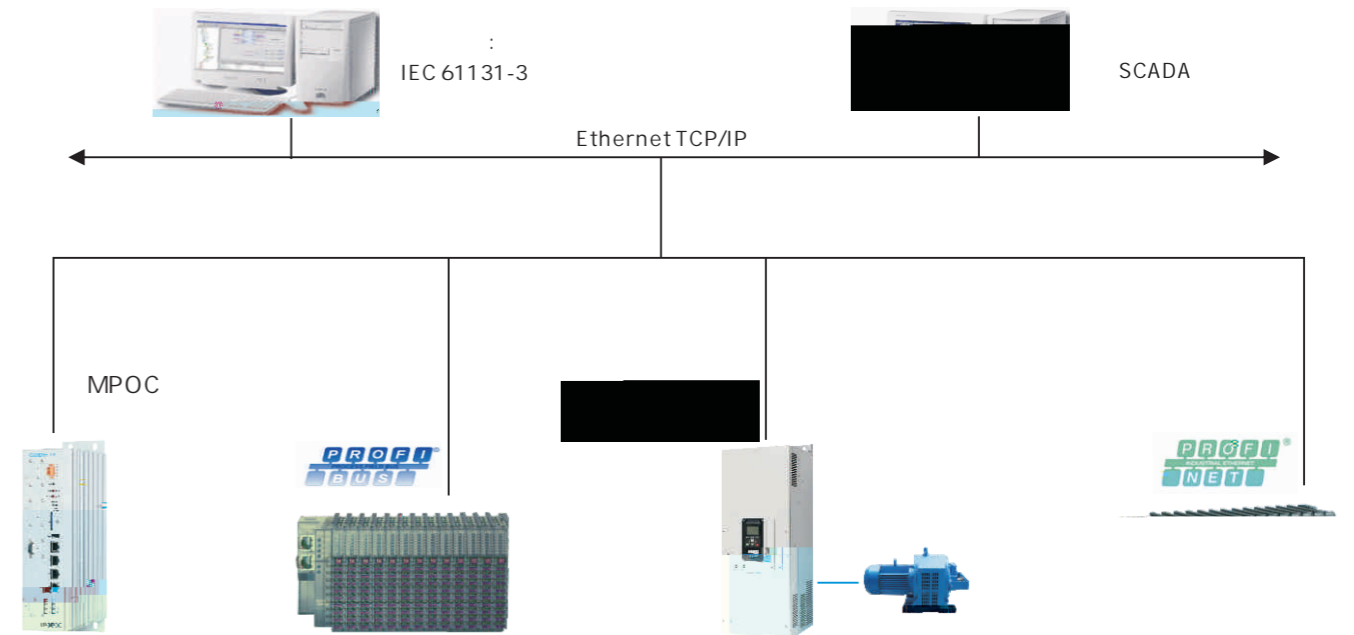
ABOUT US

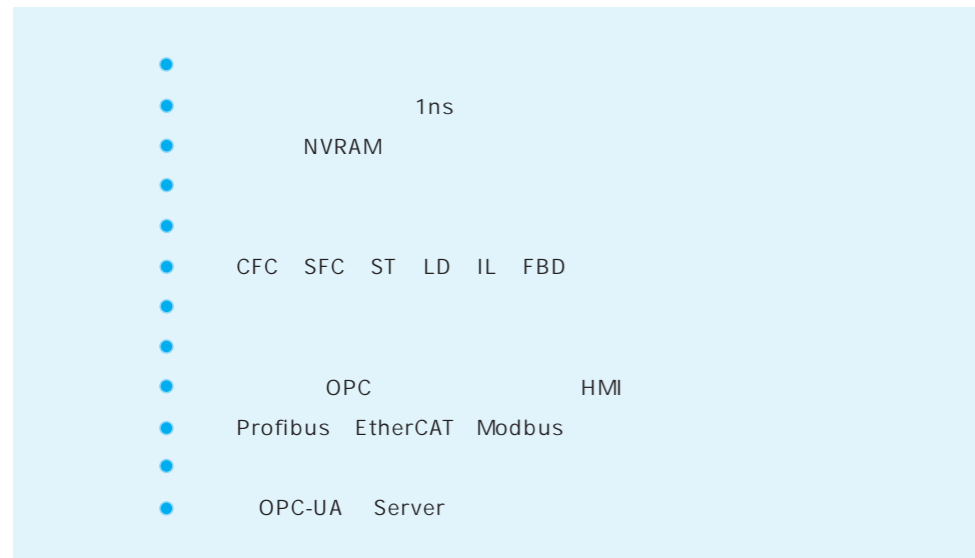
301633

" "

MPOC PLC

MPOC PLC





MPOC PLC

| | | 5cm | 5cm |
|--|--|---------------------|-------------------------|
| | | -5 ~ -55 | 0.5 /min |
| | | 5% ~ 95% | |
| | | 700W/m ² | 70~106kPa |
| | | 2 | |
| | | 2 | |
| | | 3000 | |
| | | 5.8m/s ² | 0.6g |
| | | | |
| | | -30 ~ -60 | 1 /min |
| | | 5% ~ 95% | |
| | | 6 | |
| | | | |
| | | -30 ~ -60 | |
| | | 40 | 95% |
| | | 9~200Hz | 15m/s 0.6g ² |

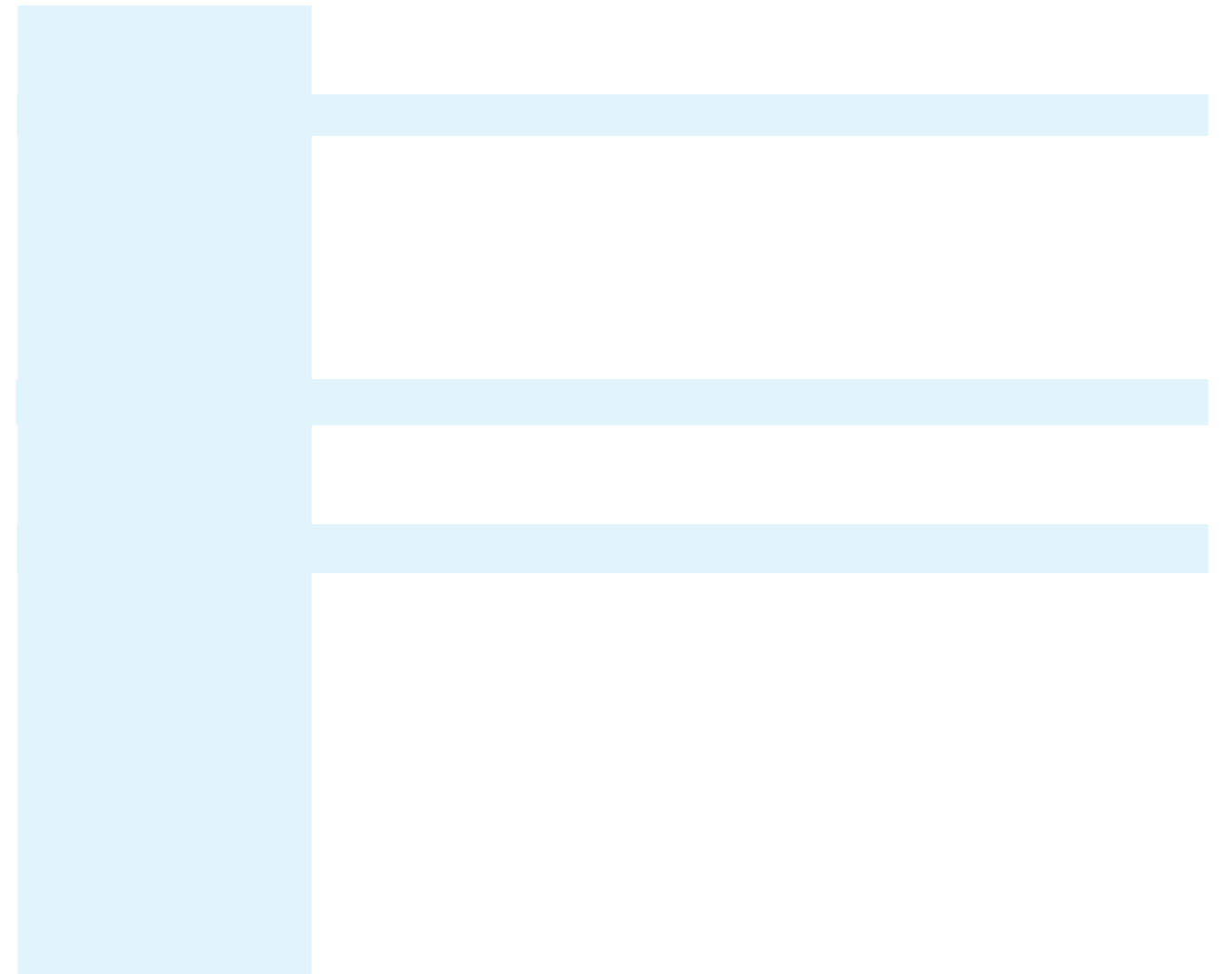
CPU

| | | | |
|-------|---|------------------------|---------|
| | MPOC21-B204A0-00 | 4 | DP |
| | MPOC21-B204D1-00 | 4 | 1 DP |
| | MPOC21-B206A0-00 | 4 | 1 DP |
| | MPOC21-B206D1-00 | 4 | 1 DP |
| | CPU | 1.2GHz | 32KB L1 |
| | 512MB | DDR2 | |
| | 1ns | | |
| | 1GB | | |
| NVRAM | 512KB | | |
| | IEC61131-3 | (CFC SFC ST LD IL FBD) | |
| | EtherCAT, Profibus, Profinet, EthernetIP, Modbus, OPCUA | | |
| | | × 4 | |
| | | × 2 | |
| | USB× | 1 | |
| | SD | × 1 | |
| | ProfiBus-DP / | × 4 Profinet / | × 8 |
| | | × 1 | |
| | | × 1 | |
| | | × 1 | |
| | 24Vdc± | 10% | |
| | 24W | | |
| IP | IP20 | | |
| | 249.8mm ()x174mm ()x81.5mm () | | |

MPOC

ProfiNet

| | | | |
|--|--|---------------------|---------------------------------|
| | | ProfiNet | |
| | | ProfiNet | cifXLC pr s |
| | | Mini PCI Express | ProfiNet |
| | | Mini PCI Express | |
| | | ProfiNet | |
| | | 10BASE T/100BASE-TX | |
| | | AIFX-RE | X4 (JST BM20B-SRDS-G-TFC 1.0mm) |
| | | 0°C...+55°C (| 0.5m/s) |
| | | 0°C...+70 | |
| | | 10%...95% | |
| | | UL | 2 |
| | | xln3Plat-Control | |



Pofinet-RT

2 RJ45 100Mbit/s

Profinet-RT/IRT
32 GD11

XML
512DI/512DO 128AI/128AO

2 2

| | | | | |
|---------|--------------------|------|--------------|-----|
| | GD11-C2PNT13 | | | |
| | 2 | RJ45 | 24VDC | |
| | RJ45 | | | |
| / | 24VDC | 10A | | |
| | 10mA | | | |
| +5VDC | 2A | 16 | GD11-PS1AA13 | |
| | Profinet-RT | | | |
| IP | | | | |
| | 255 | | | |
| | | | | |
| 4 | V ü l 0 9 e | | | |
| IO | x) | | | |
| | +24V | BF | SF | NET |
| | | | | |
| | -20-60 , 5% -90% (| | | |
| (x x) | 50x 82x 102 mm | | | |

Profibus-DP

1 DB9 9.6K-12Mbps

Profibus-DP
32 GD11

512DI/512DO 128AI/128AO

GD11-DI wellb
32

200us

| | |
|------|----------------------|
| | GD11-DI16M13 |
| | 16 24VDC |
| | |
| | 16 |
| 5VDC | 60mA |
| | 500m 300m |
| | |
| | 24VDC |
| " 0" | 5VDC 1mA |
| " 1" | 15VDC 2.5mA |
| | |
| 0 1 | 2-3ms(8) 4-6ms(32 |
| 1 0 | 2-3ms(8) 4-6ms(32 |
| | / , I |
| | 1mA |
| | 500VDC |
| | |
| | |
| | |
| | LED |
| | |

m1 1

0 V «

00

000

04U23

0

A

7mA

A

± 10V ± 5V

L4

6p3u4'ëy0€Rm! èp P S / x P

A

L i

jlná

S

S7

X

j! Q y 5x5™ Y,Só ¶\$ "H& Đ

ry

0.52

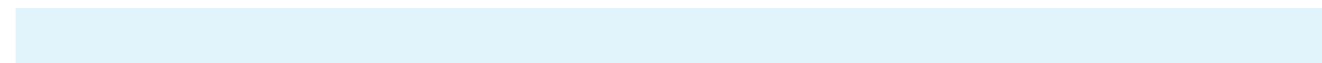
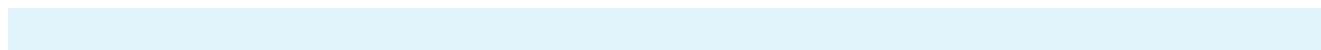
GD11-AT wellbus

32

2 4

16 8

XML



MPOC

| | | | | | | | |
|----|--------------------|--------------|-----------------------------|----|----|---------------------|---------------------------|
| 1 | MPOC21-B204A0-00 | MPOC 2.0CPU | MPOC 2.0 | 4 | | | |
| 2 | MPOC21-B206A0-00 | MPOC 2.0CPU | MPOC 2.0 DP | 4 | 1 | | |
| 3 | MPOC21-B204D1-00 | MPOC 2.0CPU | MPOC 2.0 1 DP | 4 | | | |
| 4 | MPOC21-B206D1-00 | MPOC 2.0CPU | MPOC 2.0 1 | 4 | | | DP |
| 5 | MPOC_D210 | MPOC | MP-D210 miniPCIE Vxworks | | | | Intel I210-AT |
| 6 | MPOC_CIFX 90E-DPMF | MPOC CIFX DP | MPOC CIFX DP | | | | |
| 7 | GD11-C2ECT13 | GD11 | GD11 32 | | | EtherCAT 24VDC | 2 RJ45 8 WellBUS ID |
| 8 | GD11-C2PNT13 | Pofinet-RT | GD11 32 | | | Pofinet-RT 24VDC | 2 RJ45 WellBUS IP |
| 9 | GD11-C2DPT13 | GD11 | GD11 32 | | | Pofibus-DP 24VDC | 1 DB9 8 WellBUS |
| 10 | GD11-DI16M13 | GD11 | GD11 | 16 | | / | 24VDC |
| 11 | GD11-DQ16P13 | GD11 | GD11 | 16 | | PNP | 24VDC/0.5A |
| 12 | GD11-DQ16N13 | GD11 | GD11 | 16 | | NPN | |
| 13 | GD11-AI04U23 | GD11-AI | GD11 | 4 | | | 16bit |
| 14 | GD11-AI08U23 | GD11-AI | GD11 | 8 | | | 16bit |
| 15 | GD11-AI04I23 | GD11-AI | GD11 | 4 | | | 16bit |
| 16 | GD11-AI08I23 | GD11-AI | GD11 | 8 | | | 16bit |
| 17 | GD11-AQ04U23 | GD11-AQ | GD11 ± 10V | 4 | 16 | | ž # |
| 18 | GD11-AQ04I23 | GD11-AQ | GD11 0-20mA | 4 | 16 | | |
| 19 | GD11-AQ08U23 | GD11-AQ | GD11 ± 10V | 8 | 16 | | 19 é |
| 20 | GD11-AQ08I23 | GD11-AQ | GD11 0-20mA | 8 | 16 | | 19 é |